



**Hambleton, Richmondshire  
and Whitby**  
Clinical Commissioning Group



**South Tees Hospitals**  
NHS Foundation Trust

# Consultation: Building a sustainable future for the Friarage

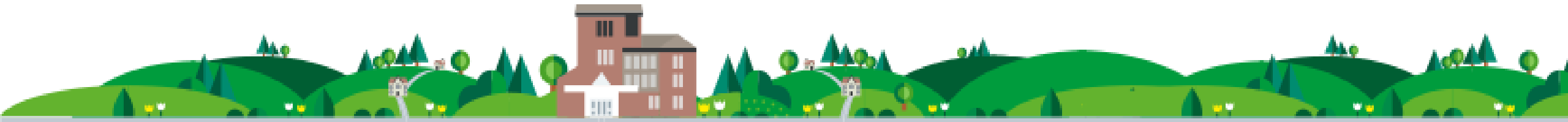
13 September to 6 December 2019



# Welcome

## Today's event will include;

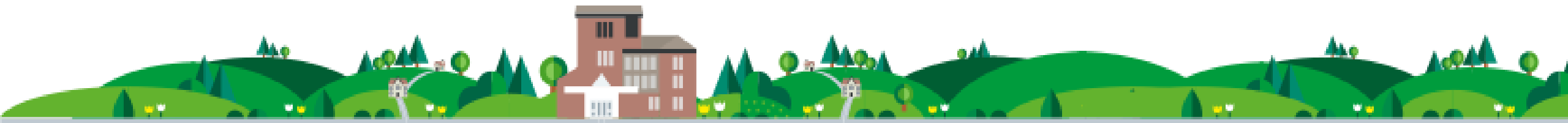
- Introduction and welcome
- Video to explain the details of the consultation
- A summary of the vision and the proposed options
- Questions and table discussions



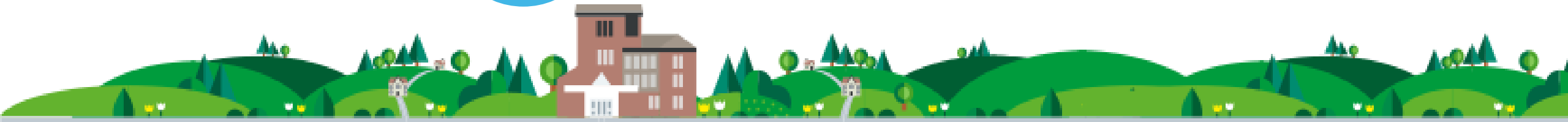
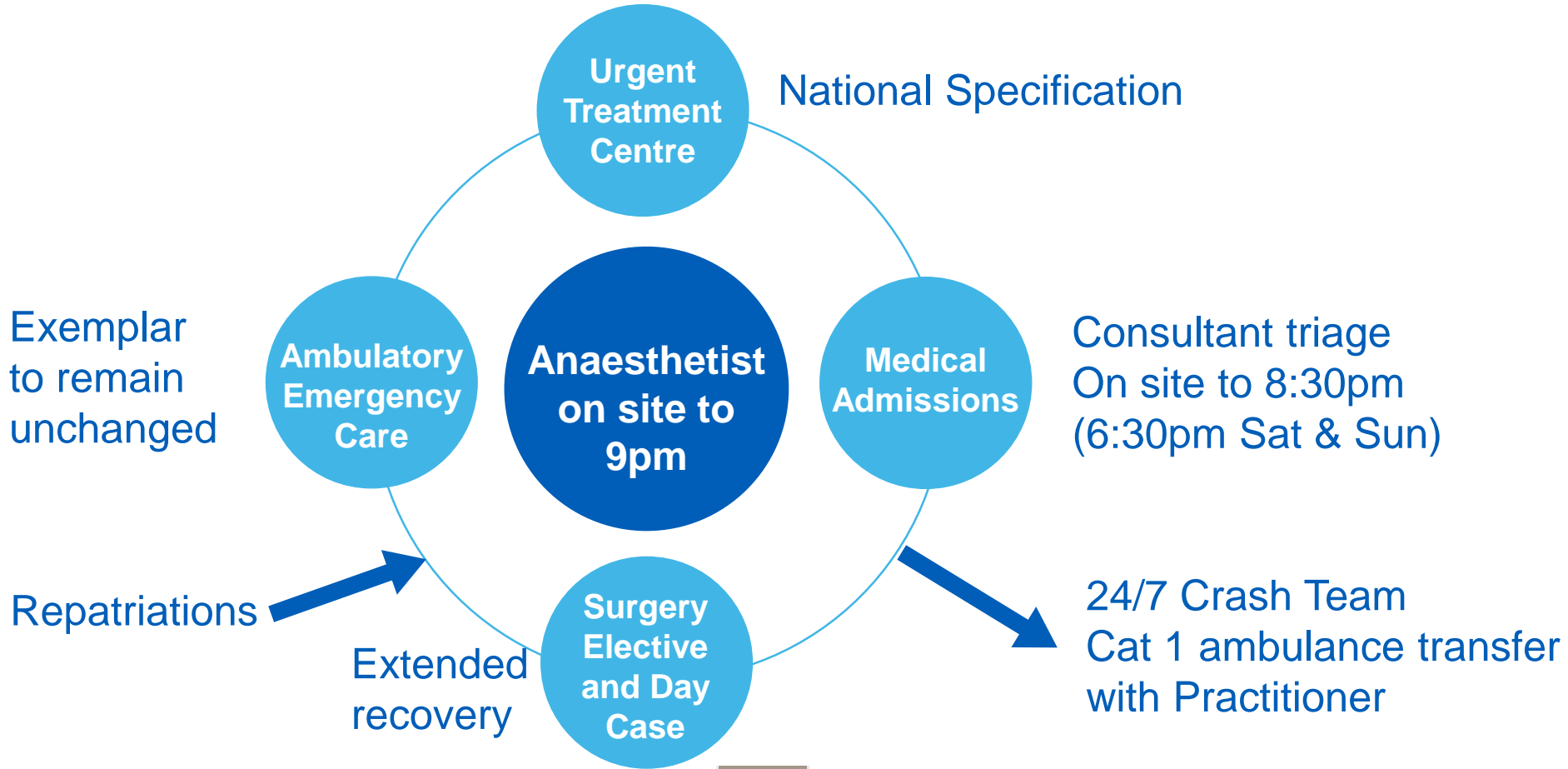
# Video

Building a sustainable future for the Friarage;

<https://youtu.be/78ufaQD9Bs4>

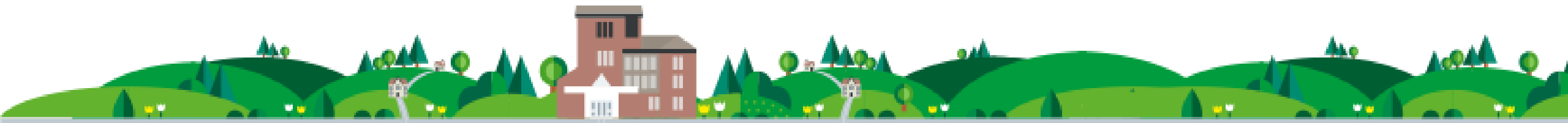


# Friarage Hospital Proposed Sustainable Model



# Proposed vision

- Access to urgent care or treatment in an Urgent Treatment Centre including children's minor illness
- Access to acute assessment and ambulatory care
- Consultant-led medical care with daily admissions
- Daily inpatient care for people that do not need specialist services
- A full range of diagnostic services
- Integrated services for frail and elderly people, supporting them to stay at home for as long as it is safe to do so
- Short stay elective surgery and day cases for specialities (including orthopaedics, urology, breast surgery and gynaecology)
- Prompt transfer to and from specialist services at other hospitals
- A full range of outpatient services



# Proposed Options

## Option

# 1

### 24/7 Urgent Treatment Centre

A 24 hour, 7 days a week  
Urgent Treatment Centre for adults  
and children with minor injuries and  
minor illnesses

## Option

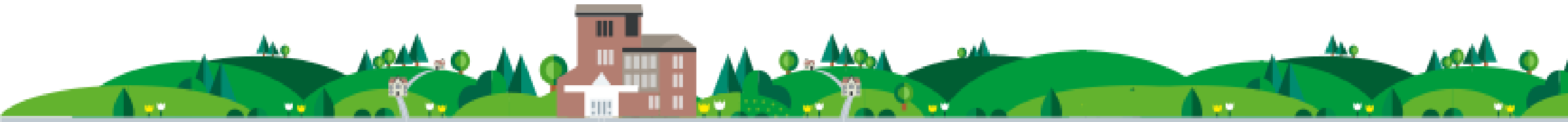
# 2

### 16/7 Urgent Treatment Centre

8am to midnight, 7 days a week  
Urgent Treatment Centre for adults  
and children with minor injuries and  
minor illnesses

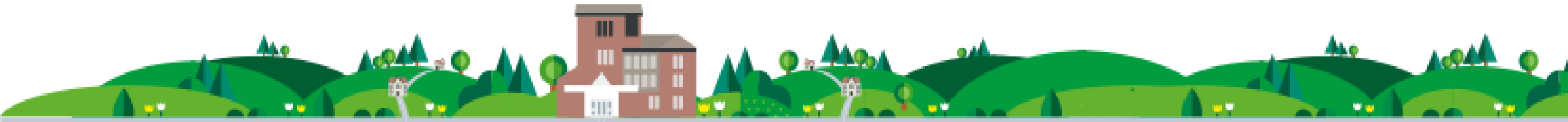
### Both options also include:

- A consultant delivered acute medical service, admitting to 6:30pm weekdays, 4:30pm weekends
- Repatriation of patients to the Friarage for care closer to home
- Elective (planned) surgery for day case and short stay inpatients



# Our criteria to assess the options

- safety/quality
- accessibility;
- feasibility;
- affordability;
- clarity for the public (where to go and when); and
- opportunity for integration.



# Questions to consider

**Q1**

What do you think about our vision?

**Q2**

Are we using the right criteria when we consider the future model?

**Q3**

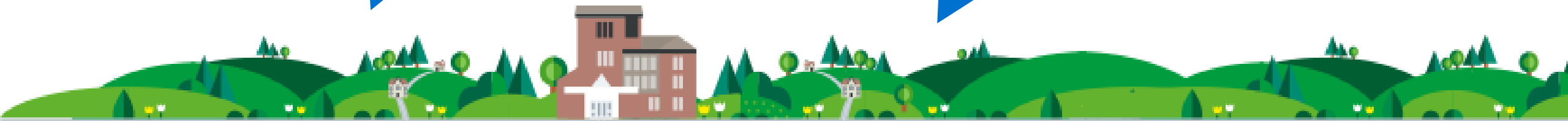
What do you think of our options and the different UTC opening hours?

**Q4**

If you or someone you care for is unwell and needs to be in hospital, what things do you feel are the most important and why?

**Q5**

Are there any other options we should consider?





# Communication & engagement timetable

- Led by HRW CCG and South Tees Hospitals Foundation Trust (STHFT)
- Supported clinically by STHFT
- Positioned with Partners
- Close public & service user involvement

Action	End Date
NHSE check point 1	November 2017
Scrutiny of Health committee	Quarterly updates 2017-2019
Pre-consultation engagement	October – December 2017
Organisational approval of potential options	June 2019
NHSE check point 2	July 2019
Formal consultation on options	September – December 2019
NHSE check point 3	February 2020
Consultation feedback & recommended outcome	March 2020
Service change & mobilisation	April 2020



# Consultation survey

[www.hambletonrichmondshireandwhitbyccg.nhs.uk](http://www.hambletonrichmondshireandwhitbyccg.nhs.uk)

